

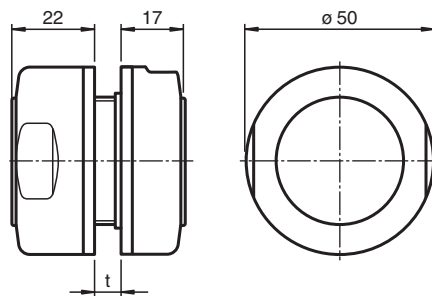
Mounting aid

MH-30H-01

- Retainer for 30 mm cylindrical sensors with smooth housing
- Installation in 3 ... 12 mm thick sheet metal
- Simple installation and exact setting

Mounting aid, 30 mm

Dimensions



Technical Data

Ambient conditions

Ambient temperature	-25 ... 85 °C (-13 ... 185 °F)
---------------------	--------------------------------

Mechanical specifications

Material	stainless steel 1.4404 / AISI 316L , EPDM
Cut out dimensions	Hole diameter 42.5 mm t = 3 ... 12 mm

Release date: 2020-12-15 Date of issue: 2021-02-05 Filename: 70128605_eng.pdf

Refer to "General Notes Relating to Pepperl+Fuchs Product Information".

Pepperl+Fuchs Group
www.pepperl-fuchs.com

USA: +1 330 486 0001
fa-info@us.pepperl-fuchs.com

Germany: +49 621 776 1111
fa-info@de.pepperl-fuchs.com

Singapore: +65 6779 9091
fa-info@sg.pepperl-fuchs.com

PEPPERL+FUCHS

Mounting



Caution!

Cap nuts (4a and 4b) must not be tightened more than fingertight!

Description

This mounting aid is suitable to fix sensors with a 30 mm smooth cylindrical housing.

Installation

Mount the sensor as follows:

1. Make a through hole in the mounting plate with the required dimensions (see illustration).
2. Insert the threaded sleeve (1a) with the flattened collar first into the through hole.
3. Screw the threaded nipple (1b) into the internal thread of the threaded sleeve (1a) from the opposite side of the mounting plate and tighten it with a 36 mm wrench.
4. Lay an O-ring (2) around the ledges of the so formed screwing at each side.
5. Lay the gaskets (3) into the cap nuts (4a) and (4b).

Pay heed for centric seating of the gaskets.!

6. Screw the cap nuts (4a) and (4b) on the screwing from both sides, loosely.
7. Place the sensor with 30 mm cylindrical smooth housing in the screwing and adjust it concerning to your sensor application.

Pay heed for the gaskets (3) that must clasp around the sensor, properly.

8. Fix the sensor position by tightening of the cap nuts (4a) and (4b) fingertight.

